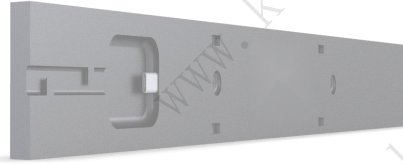


Specification Of 23.1" Shelf Edge Bar Screen



- Product introduction**
1. Support real-time management and release on mobile phones, iPads, and PCs.
 2. Support remote upgrade of advertising machine software version and OTA upgrade.
 3. Support advertising machines in the same group to play synchronously and consistently, with a synchronization interval of less than 500ms.
 4. Support mobile phone to remotely set the properties of the advertising machine, control the volume, rotation angle, time zone, power on and off of the advertising machine, etc.
 5. Support remote monitoring of the network status, system status and hardware status of the advertising machine, and monitor the content played by the advertising machine.
 6. Support multiple forms of rolling subtitles and barrages. The font, size and content of subtitles and barrages can be edited.
 7. Scheduling supports multiple priorities, including shim/normal/interruption/emergency message priorities.
 8. Scheduling supports multiple cycle modes, daily/weekly/monthly cycle.
 9. Support video/picture/marquee/subtitle/RSS/component/ppt/pdf and other media.
 10. Support self-built templates that can be modified at any time with one click on the mobile phone.

Display parameters	Screen size	23.1"
	Panel type	a-Si TFT-LCD
	Display area	585.56mm x 48.18mm
	Display ratio	>3: 1
	Resolution	1920 x 158
	Display color	16.7M
	Point distance	0.305(H) × 0.305(V)mm
	Brightness	500CD
	Contrast ratio	1500: 1
	Viewing angle	178°
	Response time	8ms
	Refresh frequency	60Hz
	Menu language	Chinese/English
Display interface	Video interface	NA
	Audio port	N/A
	Other interfaces	N/A
System parameters	CPU	ARM Corter-A35 Quad core
	RAM	1G DDR3
	ROM	8G EMMC
	WIFI	2.4G WIFI 802.11b : DQPSK, DBPSK, CCK 802.11g/n : 64-QAM,16-QAM, QPSK, BPSK
	Bluetooth	N/A
	Network port	N/A
	Interface support	TF Card×1/OTG×1/Type-c×1
Touch	System version	Android 8.1
	10-point touch	Optional
Power supply	Input voltage	~ AC 100-240V 50/60Hz
	Maximum power consumption	20W
	Standby power consumption	<0.1W (Board only)
Others	Storage temperature	-20--60°
	Amplifier power	1×1.3W
	Product Size	599.6×66×24mm
	Package Size	
	Product net weight	0.6KG
Accessories	Remote control	N/A
	AC power adapter	AC 12V/3A
	Wall mount bracket	With
	Warranty card, certificate of conformity	x 1

Structural drawings:

